



Quick Start Guide in your own language

User Guide



For more detailed information about the processes, read the User Manual.

Unboxing video



Unboxing
Watch our video to see how to correctly unbox.

Set up video



Install printing surface
Watch our video to see how to correctly position the build plate.


Quick Start Guide

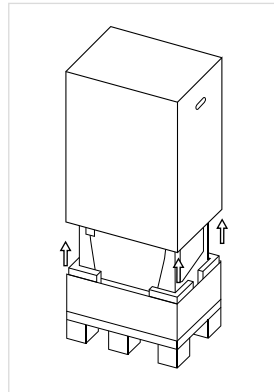
BCN3D Epsilon Series

We would like to thank all users for trusting BCN3D, for helping us to reach our dreams and to create a better product every day.

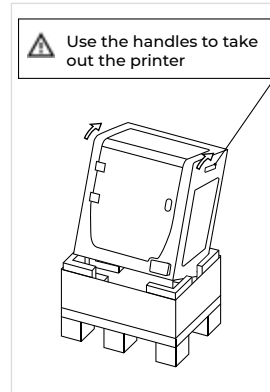
1. Unboxing

The printer is heavy and therefore this step needs to be performed by two people. Make sure that the table where the printer is being installed, is close enough.

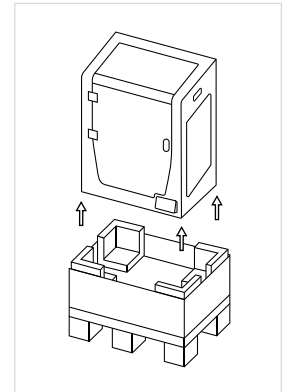
 Retain packaging and pallet for warranty service.



1. Cut the straps and remove the top box and the plastic bag containing the printer.



2. Lean the printer backwards holding it from both side handles and the front-bottom.



3. Lift with care and place it on the table.

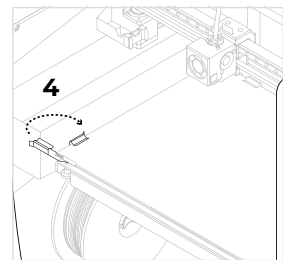
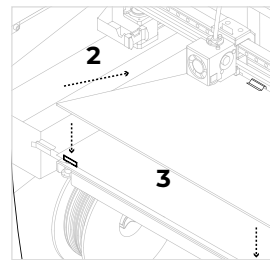
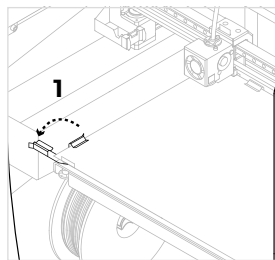
2. Set up


Remove protections

- Remove the blue sticker from the door to open it.
- Remove the protective foam under the platform.
- Remove the belt clips that prevent the axes from moving during transportation. There are four in total: two in the X belts (in front) and two in the Y belts (one on the left and one on the right).
- Finally, remove the protective films from the covers, door and side panels.

Install build plate

- Pivot the left and right spring clips away from the aluminium plate.
- Take the glass build plate from the bottom tray.
- Place the build plate on top of the aluminium plate.
- Insert the build plate with light force into the back spring clips.
- Fix it with the left and right spring clips.



 The glass build plate must be handled with care. In case of breakage, it may cause injuries.

3. Using the printer

The BCN3D Epsilon Series can be used online or offline. However connecting the printer to the network is needed in order to register it and to use the BCN3D Cloud functionality.¹

Online

Ethernet

- Take the ethernet cable out from the accessories box.
- Connect the ethernet cable to the ethernet port at the back of the printer.
- Connect the other end of the cable to a network source.

Wifi

- Find the USB WiFi Dongle in the accessories box.
- Plug the USB WiFi Dongle into the USB port at the back of the printer.

Offline

SD Card

- Find the SD Card in the tool box.
- Insert the SD Card into the SD Card slot at the front of the printer.

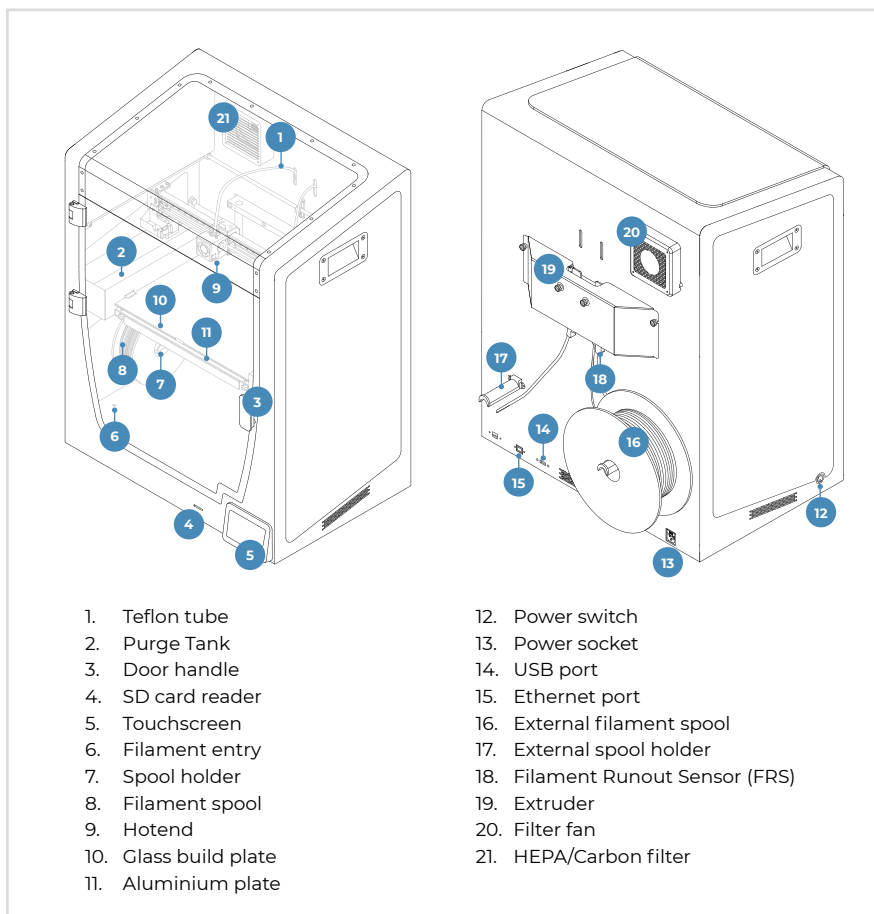
Turn on the printer

- Take the power cable out from the accessories box.
- Connect the power cable to the power socket at the back of the printer.
- Plug the other end of the cable into a wall outlet.
- Turn the printer on. The power switch is found on the left side of the printer.

Getting started

Scan the QR code to be guided through the Setup Assistant for network connectivity, loading filament and calibrating your printer.

Diagram



Information

¹If you have the option, we recommend using the printer with an Ethernet connection as it is more stable than Wifi.

Getting started



Setup Assistant
Watch our video to see how to run the Setup Assistant

What is in the box?

- BCN3D Epsilon Series with 0.4mm hotends
- Glass build plate
- 2 PLA spools
- 2 Spool holders
- Quick start guide and warranty
- SD card
- Ethernet cable
- USB cable
- Spatula
- 3 Allen keys
- Pliers
- 10 Hotend shims
- USB Wifi dongle
- Power cable
- Nylon cleaning filament
- Calibration gauge
- Magigoo glue stick
- Sample part



BCN3D Technical Assistance Services

If you do not find a solution to your problem in this manual, please contact the BCN3D Technologies support team through Contact Support.