



Quick Start Guide in your own language

User Guide



For more detailed information about the processes, read the User Manual.

Unboxing video



Unboxing
Watch our video to see how to correctly unbox.

Set up video



Install printing surface
Watch our video to see how to correctly position the build plate.

Quick Start Guide

BCN3D Sigma Series

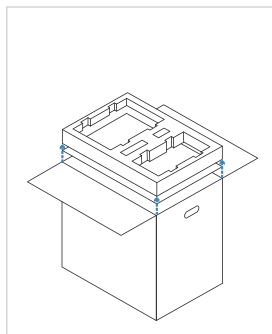
We would like to thank all users for trusting BCN3D, for helping us to reach our dreams and to create a better product every day.

1. Unboxing

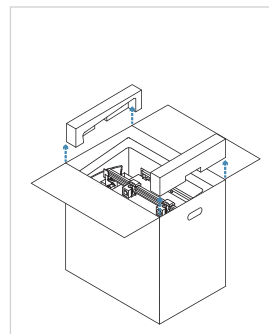
The printer is heavy and therefore this step needs to be performed by two people. Make sure that the table where the printer is being installed, is close enough.

Retain packaging for warranty service.

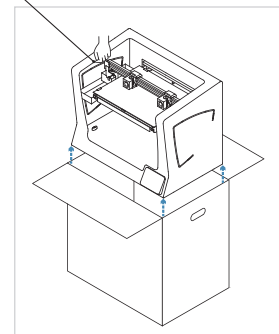
Proper area to take out the printer with your hands.



1. Remove the components from the foam and place them on a table. Then remove the foam and the cardboard.



2. Remove the lateral foam protections.



3. Lift the printer with care holding it from the side flanges and place it on the table.

4. Open the plastic bag containing the printer.

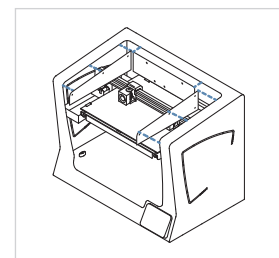
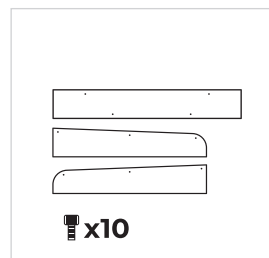
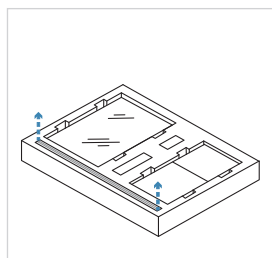
2. Set up

Remove protections

- Remove the protective foam under the platform.
- Remove the belt clips that prevent the axes from moving during transportation. There are four in total: two in the X belts (in front) and two in the Y belts (one on the left and one on the right).

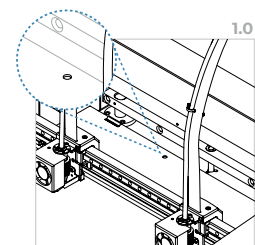
Install plastic covers

- Take the plastic covers from the packaging and thumbscrews from the accessories box.
- Peel off the protective films.
- Use the thumbscrews to install the plastic covers.



Install build plate

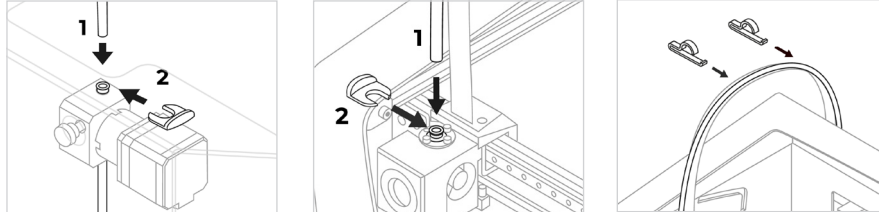
- Pivot the left and right spring clips away from the aluminium plate.
- Take the glass build plate from the upper protective foam.
- Place the build plate on top of the aluminium plate in such a way that the autocalibration square faces the bottom the printer. Make sure that you'll always put the same face of the build plate on the top. We recommend you to mark the upper face. (image 1.0)
- Insert the build plate with light force into the back spring clips.
- Fix it with the left and right spring clips.



The glass build plate must be handled with care. In case of breakage, it may cause injuries.

Install teflon tubes

- Take the teflon tubes, coupling clips, and flat cable clips from the accessories box.
- Move the X axis rail manually towards the front in order to work more comfortably.
- Insert the teflon tube in the extruder connector behind the printer until it stops.
- Insert the opposite end of the tube into the hotend connector until it stops.
- Slide the black coupling clips under the grey connectors.
- Attach the teflon tube to the flat cable using the flat cable clips.



3. Using the printer

The BCN3D Sigma Series can be used online or offline. However connecting the printer to the network is needed in order to register it and to use the BCN3D Cloud functionality.¹

Online

Ethernet

- Take the ethernet cable out from the accessories box.
- Connect the ethernet cable to the ethernet port at the back of the printer.
- Connect the other end of the cable to a network source.

Wifi

- Find the USB WiFi Dongle in the accessories box.
- Plug the USB WiFi Dongle into the USB port at the back of the printer.

Offline

SD Card

- Find the SD Card in the tool box.
- Insert the SD Card into the SD Card slot at the front of the printer.

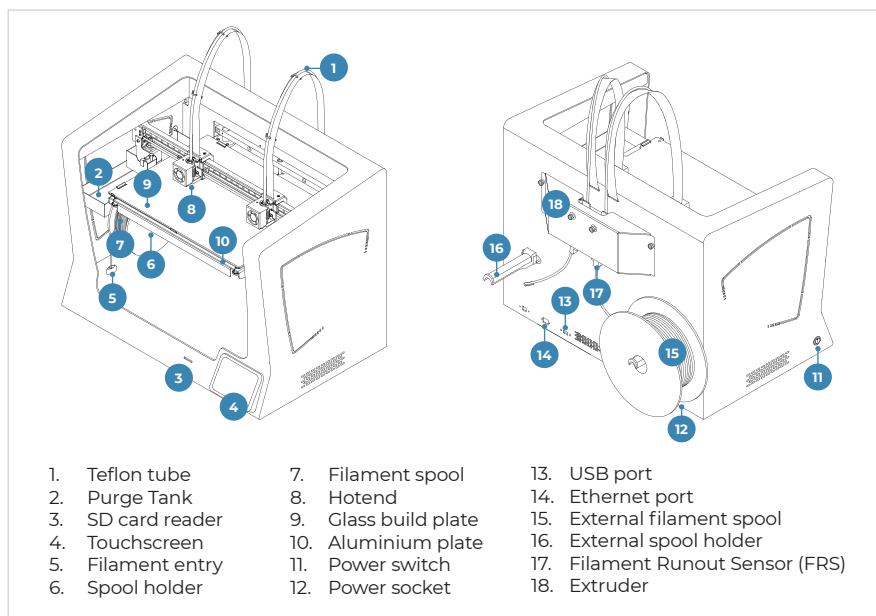
Turn on the printer

- Take the power cable out from the accessories box.
- Connect the power cable to the power socket at the back of the printer.
- Plug the other end of the cable into a wall outlet.
- Turn the printer on. The power switch is found on the left side of the printer.

Getting started

Scan the QR code to be guided through the Setup Assistant for network connectivity, loading filament and calibrating your printer.

Diagram



Information

¹If you have the option, we recommend using the printer with an Ethernet connection as it is more stable than Wifi.

Getting started



Setup Assistant

Watch our video to see how to run the Setup Assistant

What is in the box?

- BCN3D Sigma Series with 0.4mm hotends
- Glass build plate
- 2 PLA spools
- 2 Spool holders
- Quick start guide
- SD card
- Ethernet cable
- USB cable
- Spatula
- 3 Allen keys
- Pliers
- USB Wifi dongle
- Power cable
- Nylon cleaning filament
- Magigoo glue stick
- Sample part
- 3 plastic covers
- 10 Thumbscrews
- 2 Teflon tubes
- 4 Flat cable clips
- 4 Coupling clips



BCN3D Technical Assistance Services

If you do not find a solution to your problem in this manual, please contact the BCN3D technical support team through Contact Support.