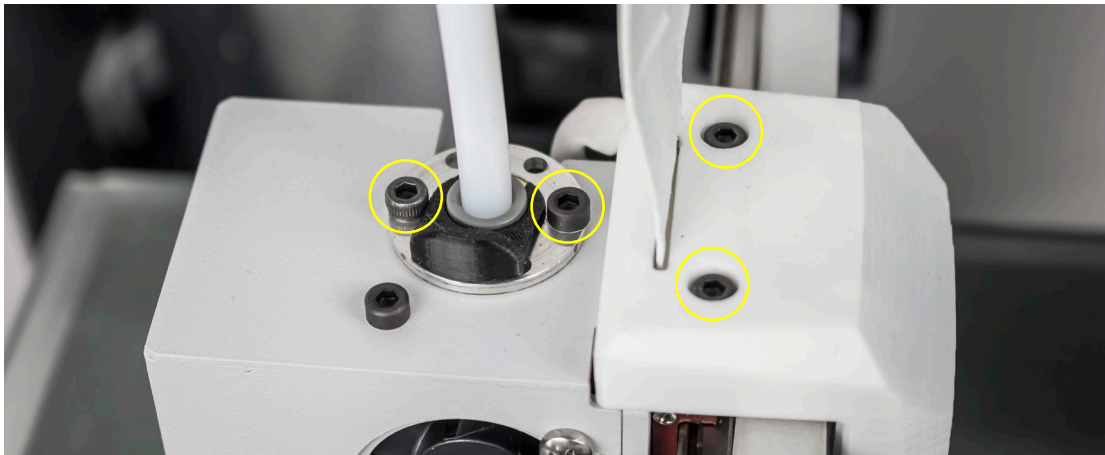


Technical manual

Upgrade your printer: Smart fan

Upgrade your printer: Smart fan

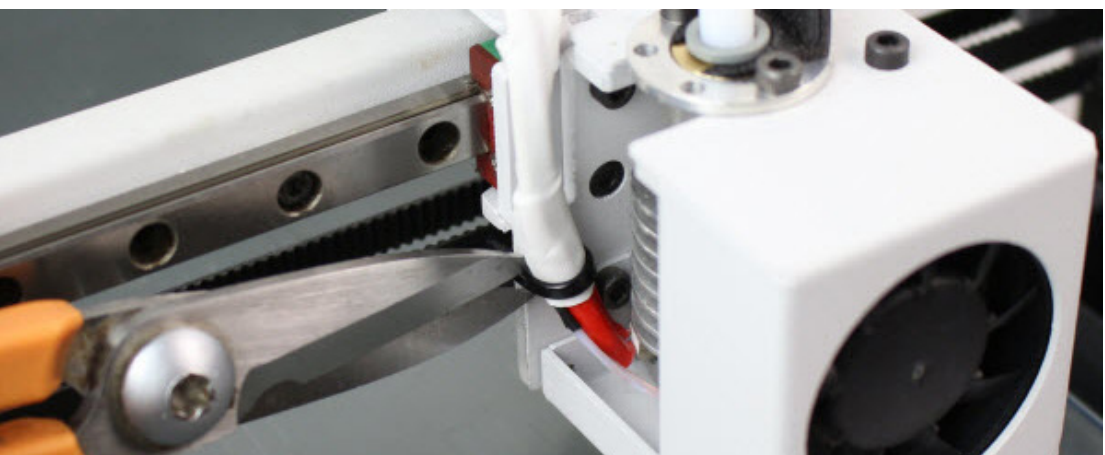
1. Remove the four Allen screws from the hotend and the printed cover.



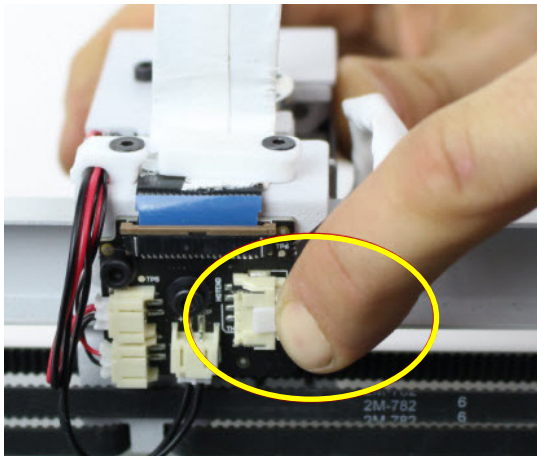
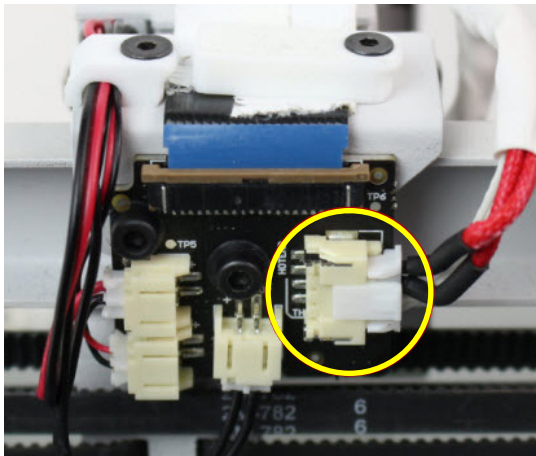
2. Remove and slide the cover-up. You can hold the cover as the following picture.



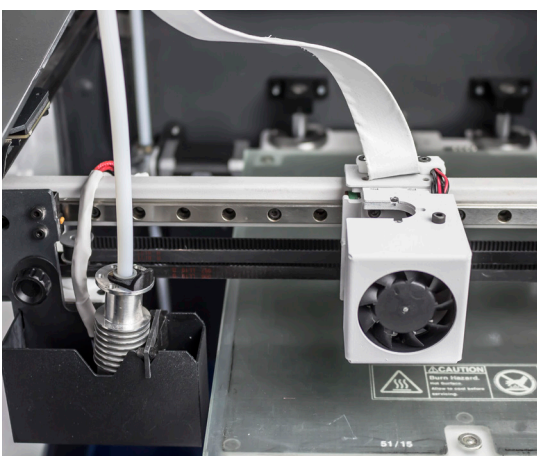
3. Cut the zip-tie and remove it.



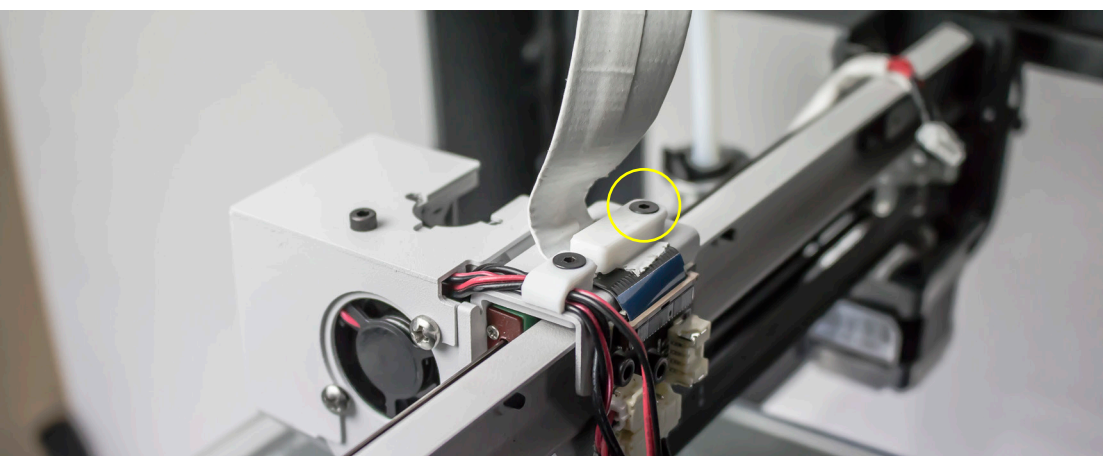
4. Disconnect the cable from the hotend pressing de connector.



5. Take the hotend out of the tool head.

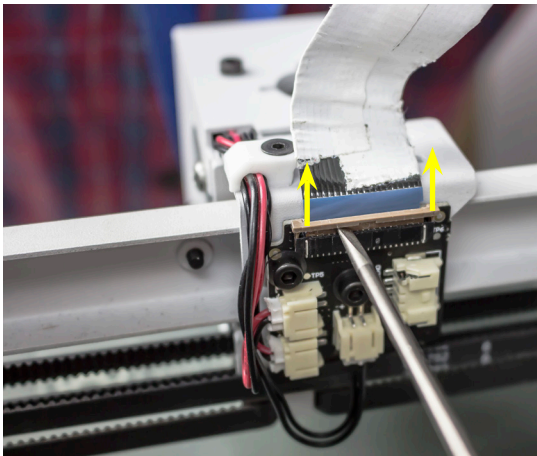
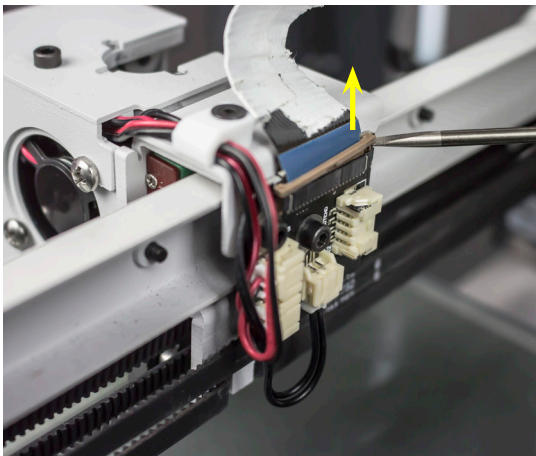


6. Remove the flat cable holder unscrewing its Allen screw.

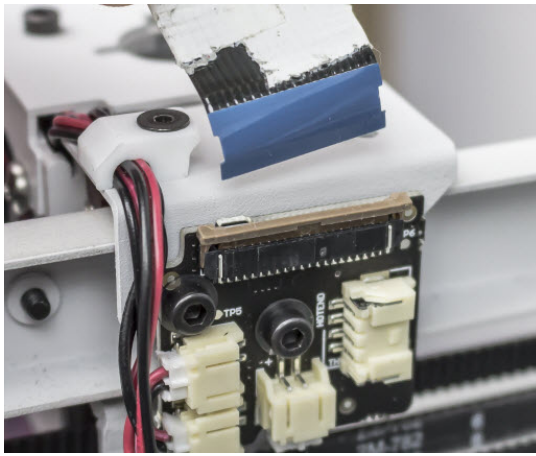


Upgrade your printer: Smart fan

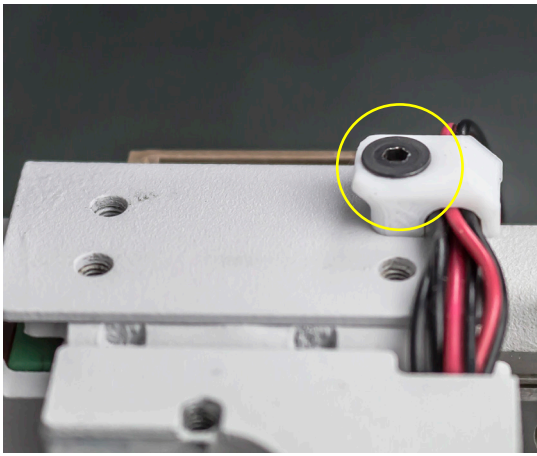
7. Gently release the latch, first one side and then the other.



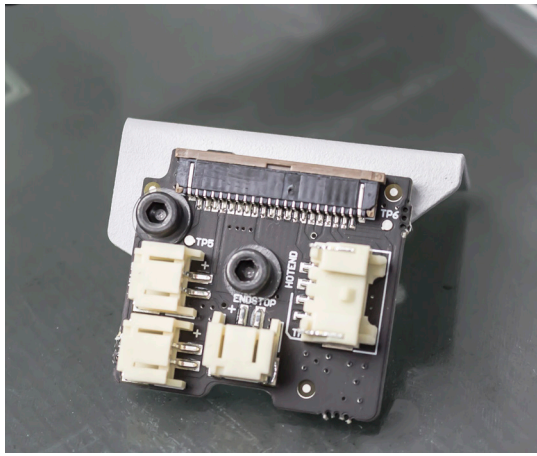
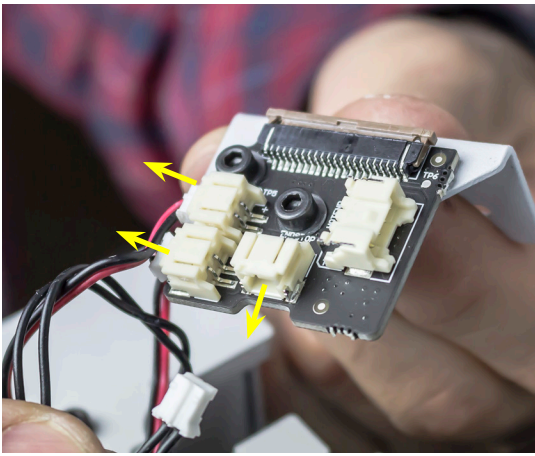
8. Remove the flat cable.



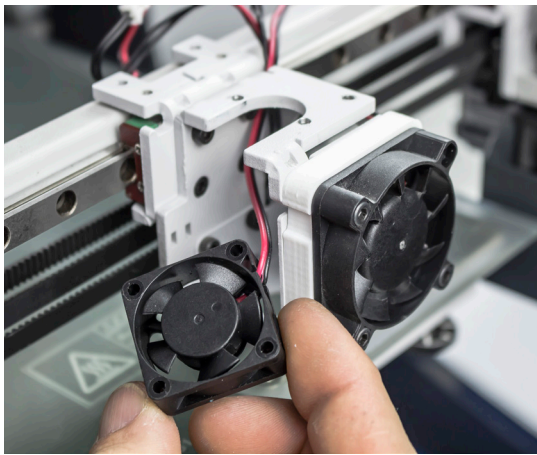
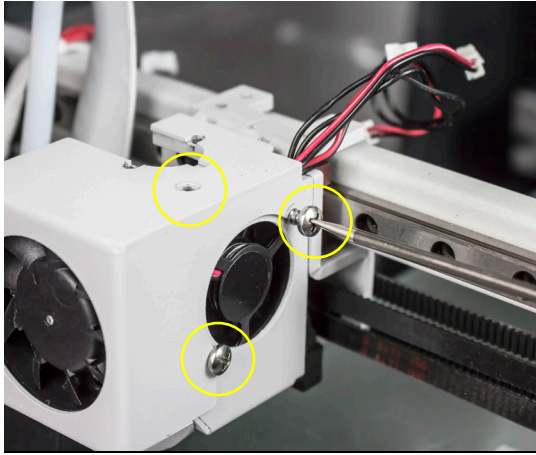
9. Remove the other cables holder unscrewing the Allen screw.



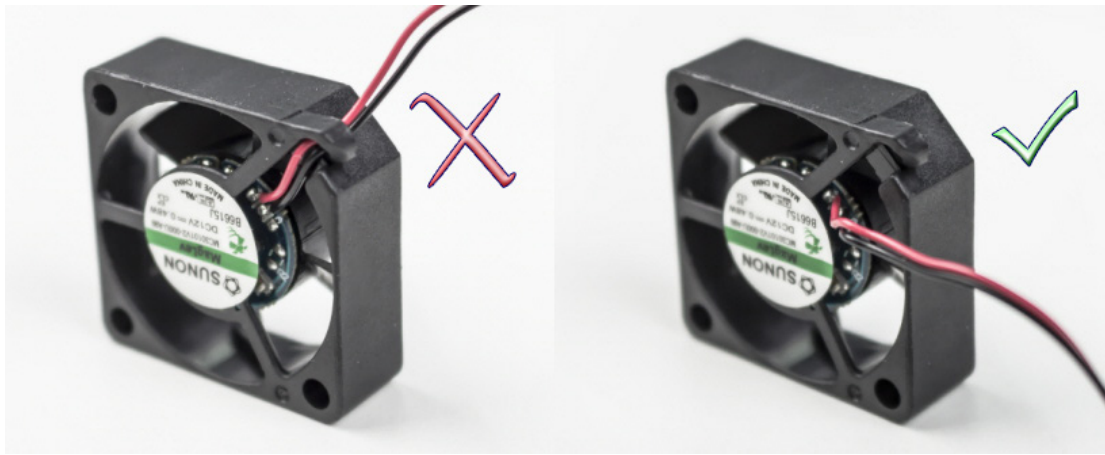
10. Disconnect the cables of the endstop and the two fans.



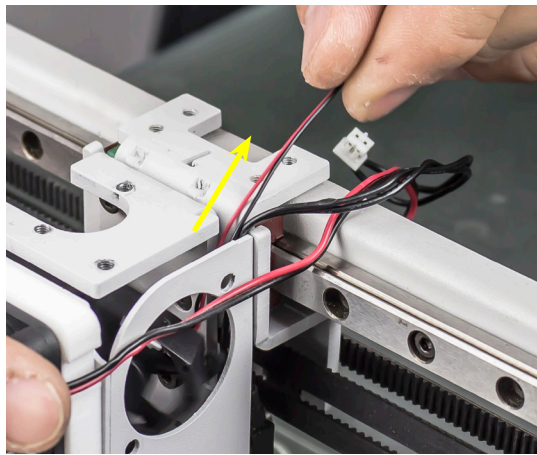
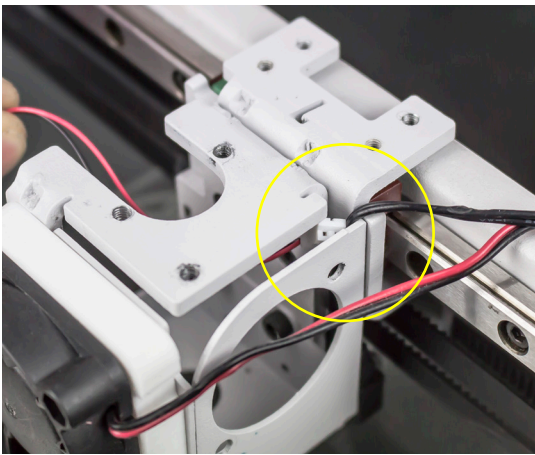
11. Unscrew the two Phillip screws from the cooler fan and the Allen screw from the tool head cover. Then, remove the cooler fan.



12. Take the new fan and make sure its cable is out of locking tab.



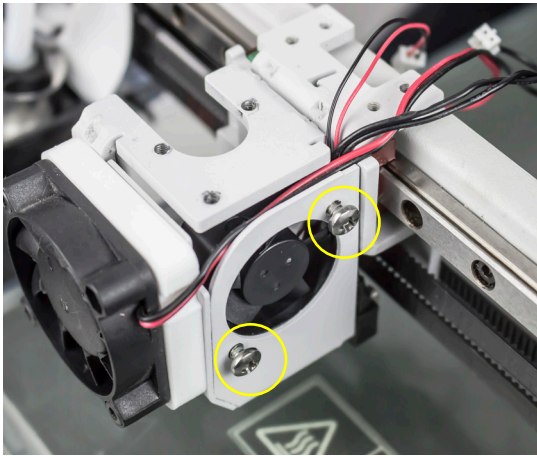
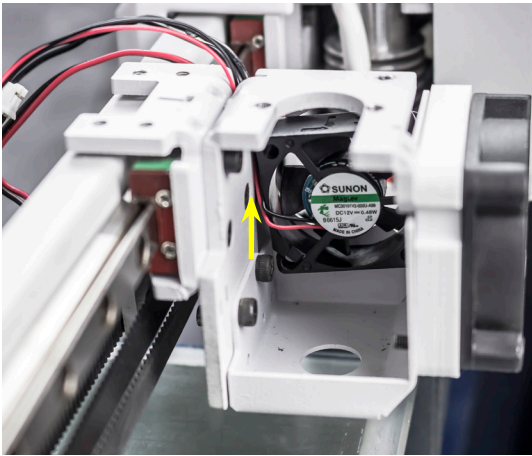
13. Insert the fan cable through the hole of the corner as the following pictures.



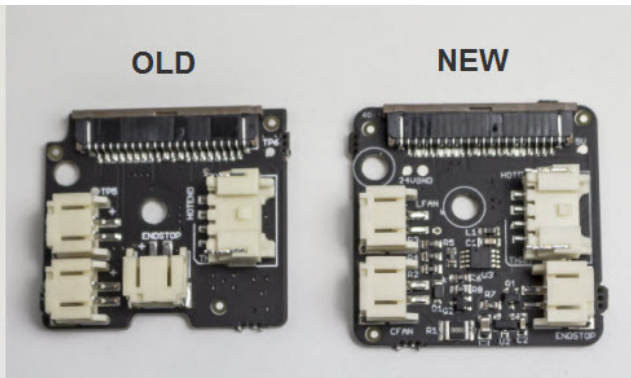
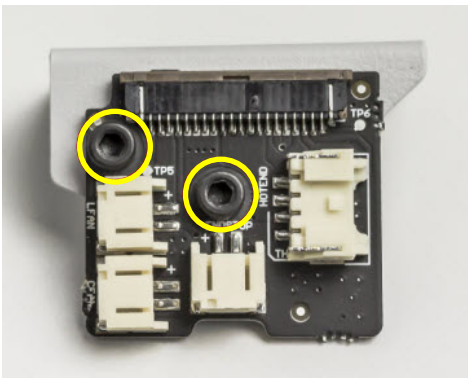
Upgrade your printer: Smart fan

14. Make sure to put the fan in the correct position, with the sticker inwards and the cable as the following picture.

15. Screw halfway the two Phillip screws of the cooler fan.

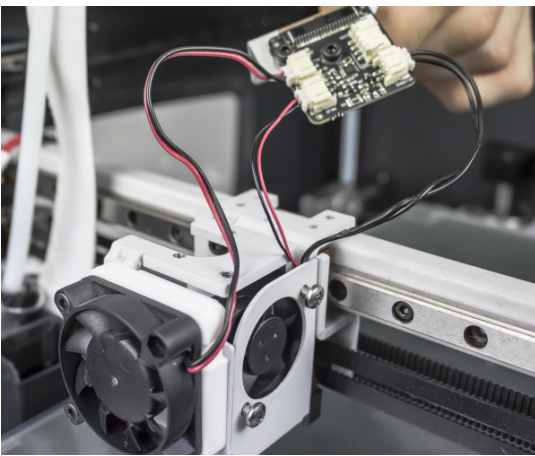


16. Remove the two Allen screws and the four nylon washers of the old connection board.

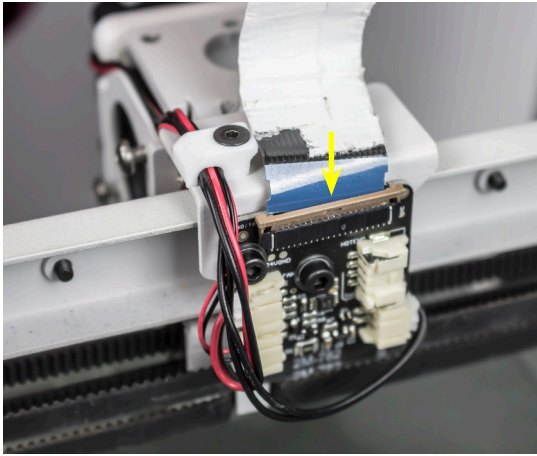
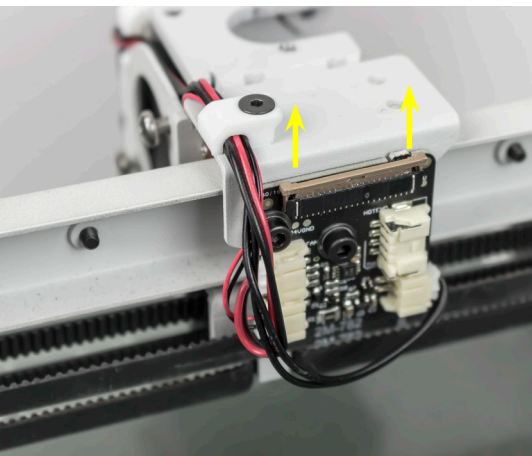


17. Take the new connection board with the same screws and washers and screw them on the same metal sheet. The washers have to be on both sides of the connection board.

18. Connect the two fans and the endstop. Look closely where each one is connected.

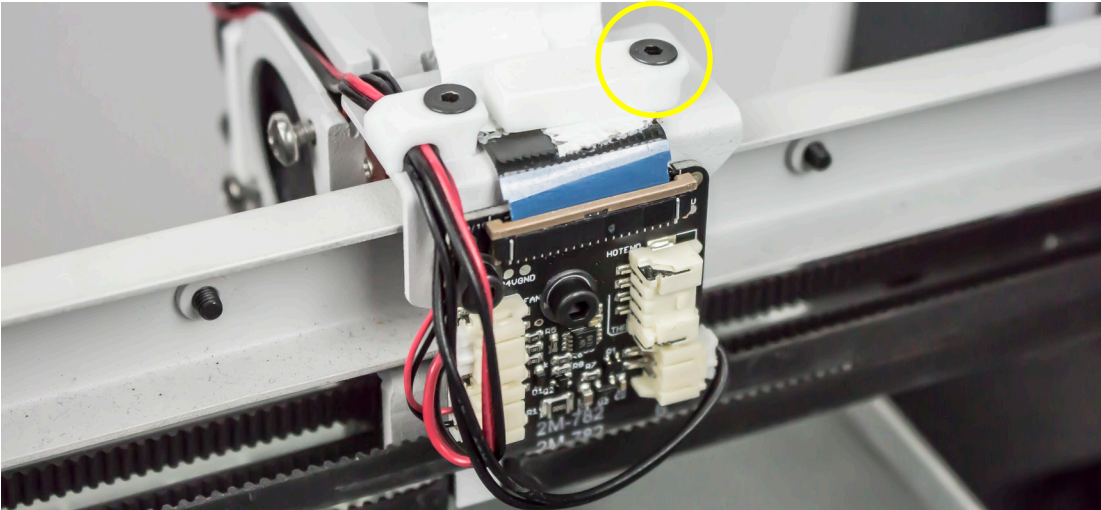


19. Position this assembly in its place and screw the holder with the cables well positioned. Connect the flat cable. First pull the latch-up gently, then insert de the flat cable in the connector carefully, and finally push the latch down. Make sure the latch is really tight.

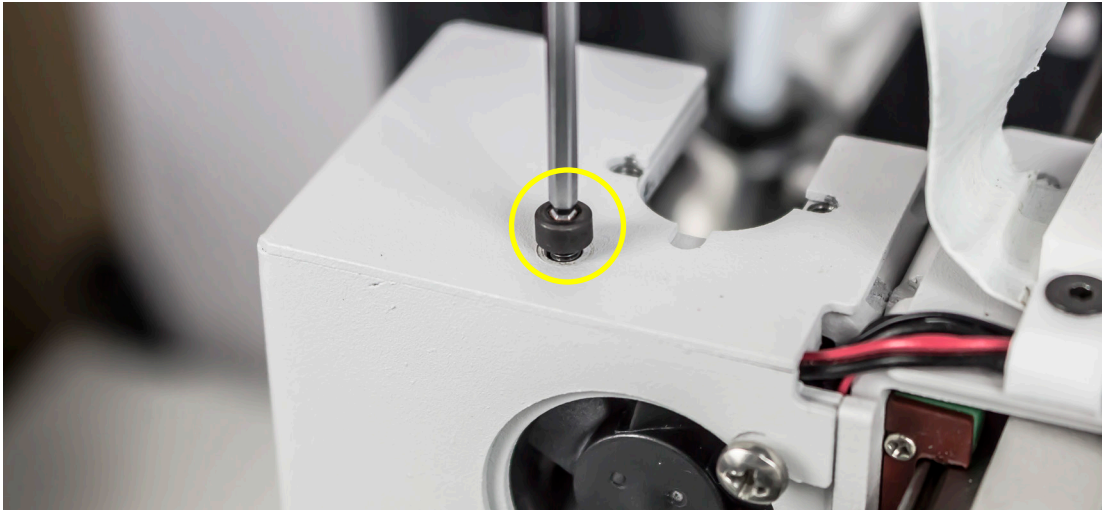


Upgrade your printer: Smart fan

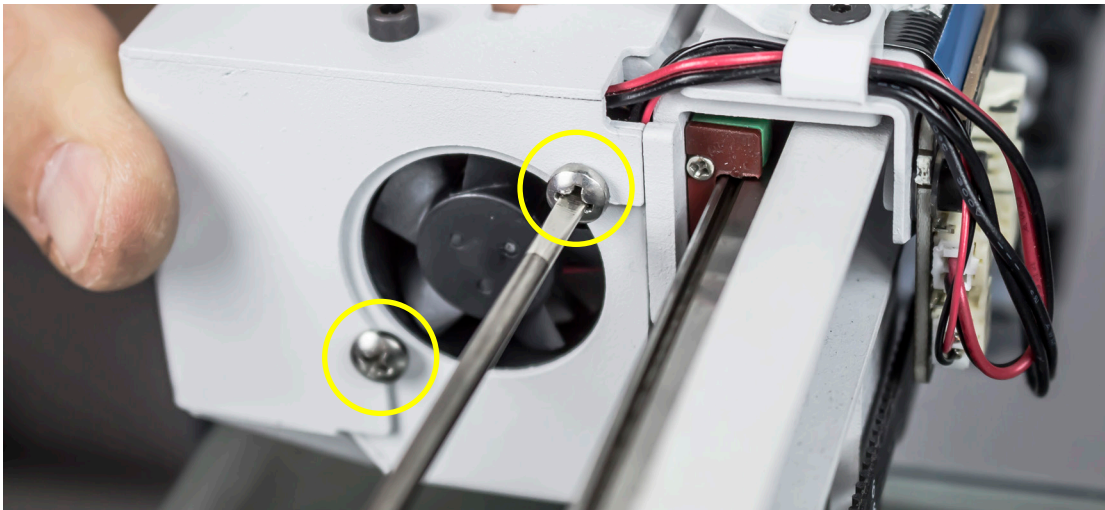
20. Screw the flat cable holder, aligned with the other cables holder and with the cable well positioned.



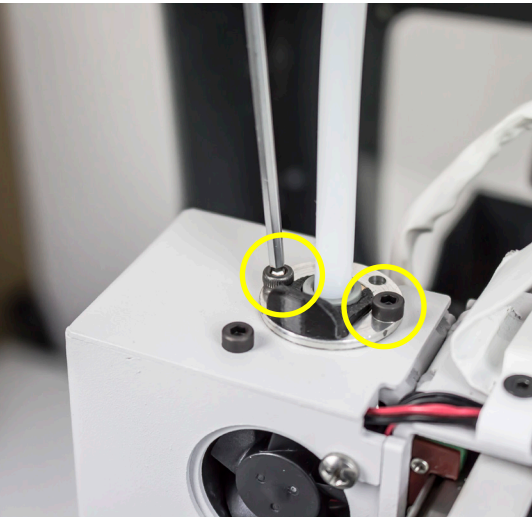
21. Place the tool head cover and screw its Allen screw.



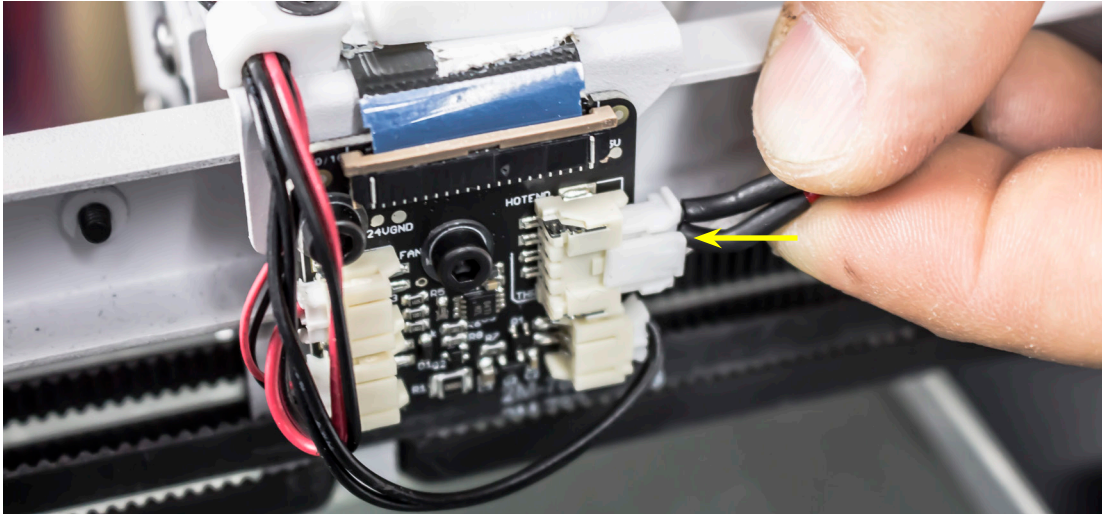
22. Fully screw the two fan screws.



23. Place and screw the hotend.



24. Connect the hotend.



25. Slide the cover down, place and screw it.

