

BCN3D Epsilon

Printed Parts

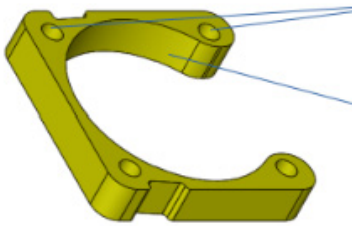
1. Layer Fan Spacer
2. Sd Spacer
3. Idler Spacer
4. Y Endstop Spacer
5. Connection Cover
6. Bowden Entry Top
7. Front Led connector clamp
8. Driver Spacer Upgrade
9. Cloth Support
10. Coupling Clip NV
11. Bowden Cable Clip
12. Spool Holder
13. Front led inferior
14. Front led Superior
15. FRS L & R
16. Soporte Filtro
17. Tapa ventilador
18. T Bearing Spacer
19. Distanciador Mainboard
20. External Spool Holder

BCN3D Epsilon

Printed Parts

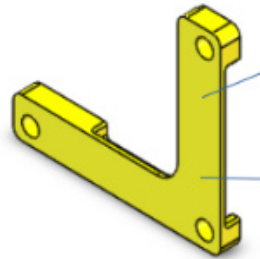
1. LAYER FAN

unit/printer: 2
Nozzle: 0.4 mm
Material: PET-G (black)
Layer height: 0.2 mm
Temperature Hotend: 240°C
Speed: 40 mm/s



2. SD SPACER

unit/printer: 1
Nozzle: 0.4 mm
Material: PET-G (black)
Layer height: 0.15 mm
Temperature Hotend: 235°C
Speed: 40 mm/s



3. IDLER SPACER

unit/printer: 2
Nozzle: 0.4 mm
Material: PET-G (black)
Layer height: 0.2 mm
Temperature Hotend: 240°C
Speed: 45 mm/s



4. Y ENDSTOP SPACER

unit/printer: 1
Nozzle: 0.4 mm
Material: PET-G (black)
Layer height: 0.15 mm
Temperature Hotend: 235°C
Speed: 35 mm/s

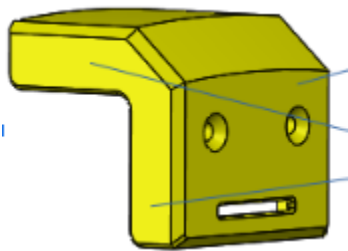


BCN3D Epsilon

Printed Parts

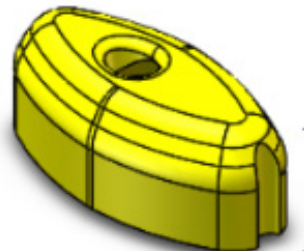
5. CONNECTION COVER

unit/printer: 2
Nozzle: 0.4 mm
Material: PET-G (white)
Layer height: 0.2 mm
Temperature Hotend: 240°C
Speed: 45 mm/s



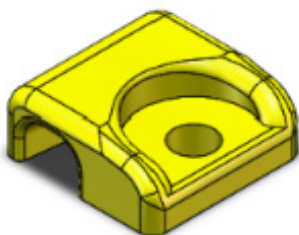
6. BOWDEN ENTRY TOP

unit/printer: 2
Nozzle: 0.4 mm
Material: PET-G (black)
Layer height: 0.2 mm
Temperature Hotend: 240°C
Speed: 45 mm/s



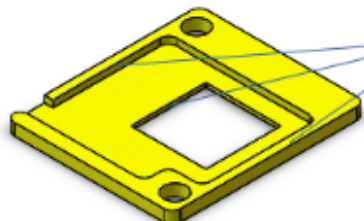
7. FRONT LED CONNECTOR CLAMP

unit/printer: 2
Nozzle: 0.4 mm
Material: PET-G (black)
Layer height: 0.1 mm
Temperature Hotend: 235°C
Speed: 40 mm/s



8. DRIVER SPACER

unit/printer: 6
Nozzle: 0.4 mm
Material: PET-G (black)
Layer height: 0.1 mm
Temperature Hotend: 235°C
Speed: 40 mm/s

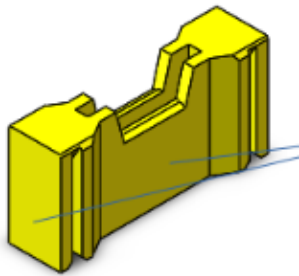


BCN3D Epsilon

Printed Parts

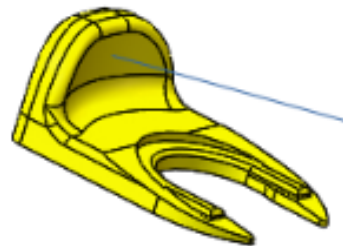
9. CLOTH SUPPORT

unit/printer: 2
Nozzle: 0.4 mm
Material: PET-G (black)
Layer height: 0.15 mm
Temperature Hotend: 235°C
Speed: 30 mm/s



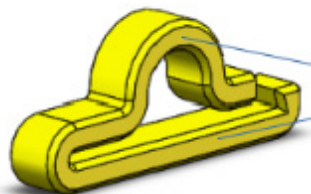
10. COUPLING CLIP

unit/printer: 6
Nozzle: 0.4 mm
Material: PET-G (black)
Layer height: 0.1 mm
Temperature Hotend: 235°C
Speed: 30 mm/s



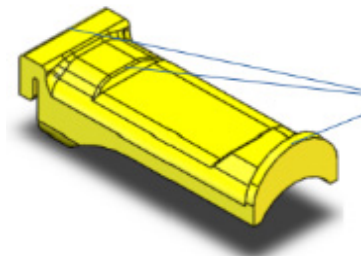
11. BOWDEN CABLE CLIP

unit/printer: 4
Nozzle: 0.4 mm
Material: PET-G (black)
Layer height: 0.15 mm
Temperature Hotend: 235°C
Speed: 40 mm/s



12. SPOOL HOLDER

unit/printer: 2
Nozzle: 0.4 mm
Material: PET-G (black)
Layer height: 0.2 mm
Temperature Hotend: 240°C
Speed: 45 mm/s

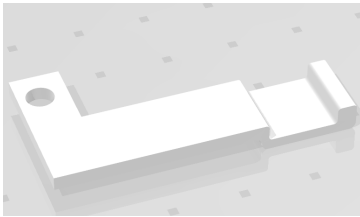


BCN3D Epsilon

Printed Parts

13. FRONT LED INFERIOR

unit/printer: 2
Nozzle: 0.4 mm
Material: PET-G (black)
Layer height: 0.15 mm
Temperature Hotend: 240°C
Speed: 50 mm/s
Note: Print by supporting the upper side of the image. Without supports.



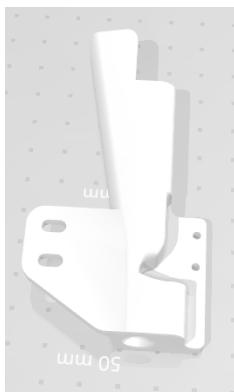
14. FRONT LED SUPERIOR

unit/printer: 2
Nozzle: 0.4 mm
Material: PET-G (black)
Layer height: 0.15 mm
Temperature Hotend: 240°C
Speed: 50 mm/s
Note: Print by supporting the upper side of the image. Without supports.



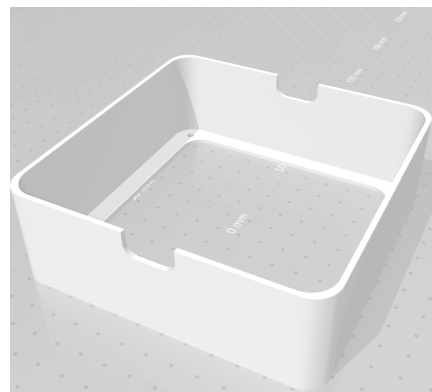
15. FRS L & R

unit/printer: 1 (uno de cada lado)
Nozzle: 0.4 mm
Material: PET-G (black)
Layer height: 0.2 mm
Temperature Hotend: 240°C
Speed: 45 mm/s
Note: Print vertically. With supports (only touching build).



16. FILTER SUPPORT

unit/printer: 1
Nozzle: 0.4 mm
Material: PET-G (black)
Layer height: 0.2 mm
Temperature Hotend: 240°C
Speed: 50 mm/s



BCN3D Epsilon

Printed Parts

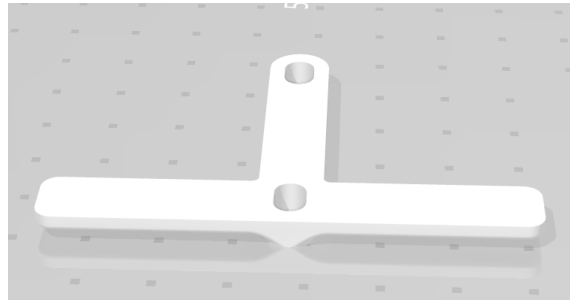
17. FILTER COVER

unit/printer: 1
Nozzle: 0.4 mm
Material: PET-G (black)
Layer height: 0.2 mm
Temperature Hotend: 240°C
Speed: 50 mm/s



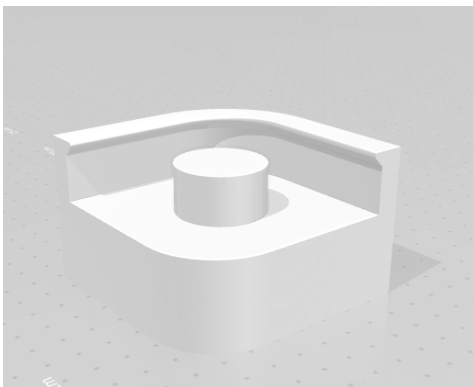
18. T BEARING PILLOW

unit/printer: 1
Nozzle: 0.4 mm
Material: PET-G (black)
Layer height: 0.15 mm
Temperature Hotend: 235°C
Speed: 45 mm/s



19. MAINBOARD SPACER

unit/printer: 1
Nozzle: 0.4 mm
Material: PET-G (black)
Layer height: 0.1 mm
Temperature Hotend: 235°C
Speed: 30 mm/s



20. EXTERNAR SPOOL HOLDER

unit/printer: 2
Nozzle: 0.4 mm
Material: PET-G (black)
Layer height: 0.2 mm
Temperature Hotend: 240°C
Speed: 45 mm/s

